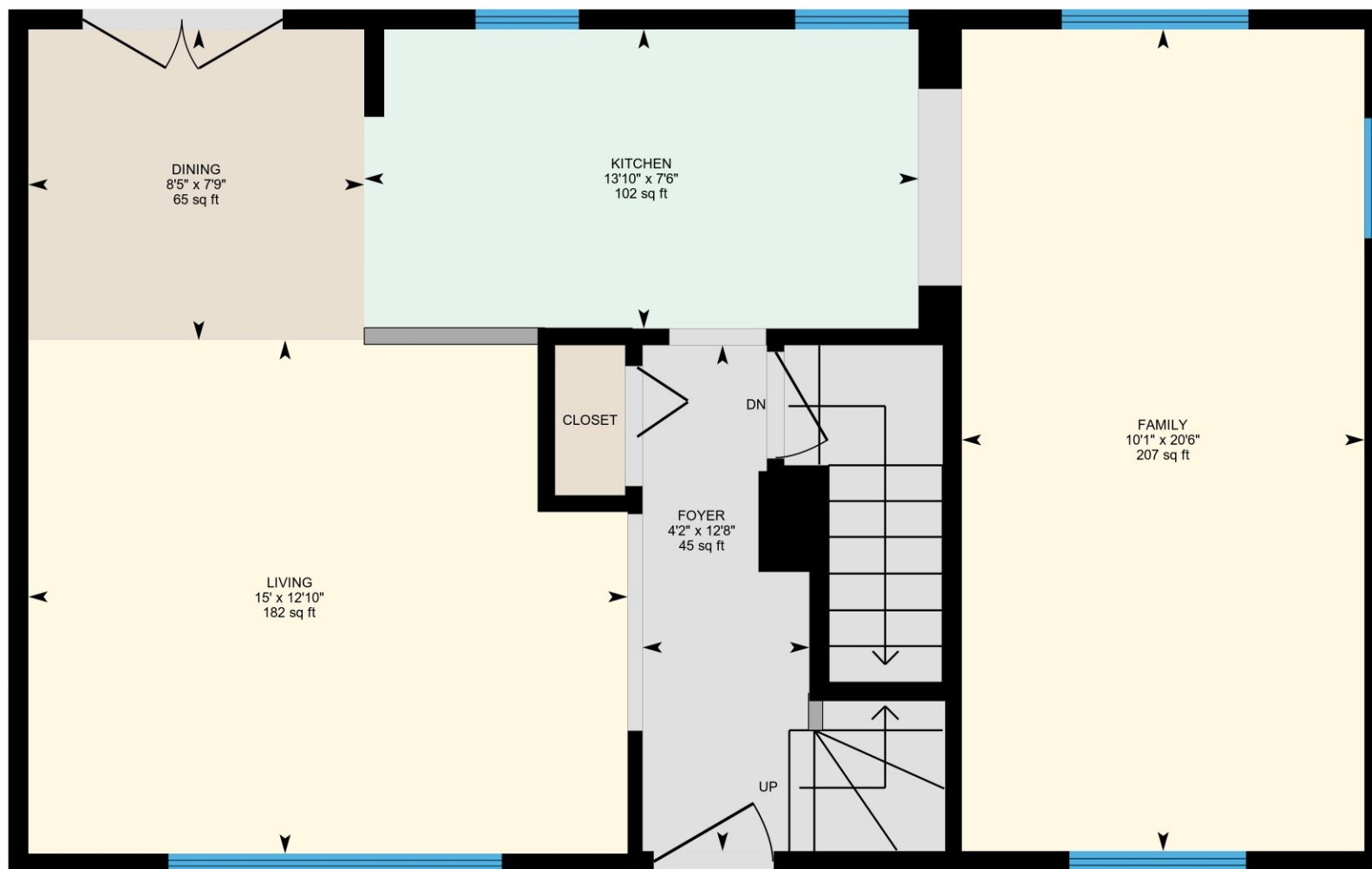


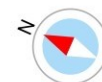
778 Byng Ct, Milton, ON

Main Floor Exterior Area 741.75 sq ft
Interior Area 686.95 sq ft



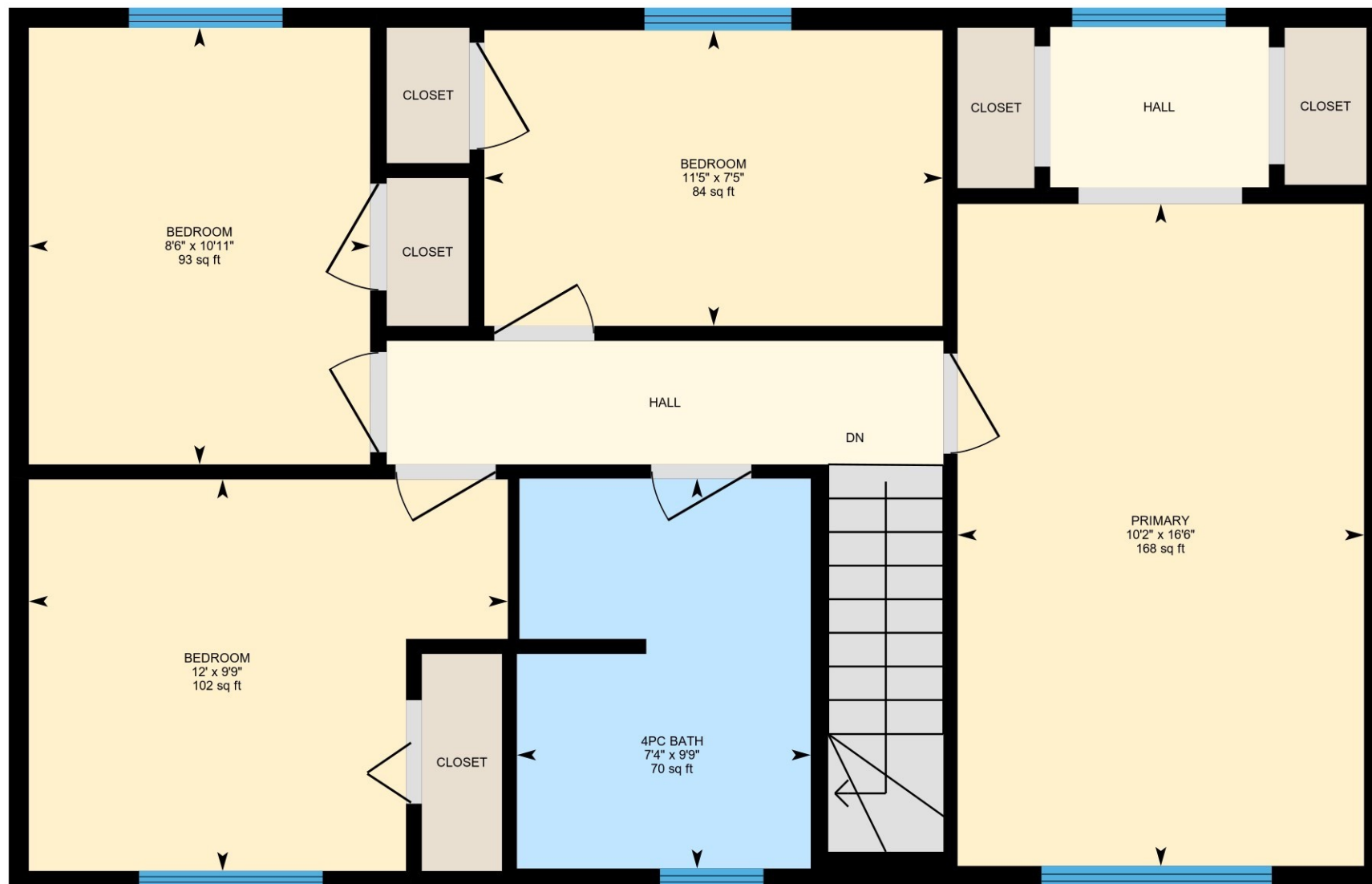
0 3 6 ft

PREPARED: 2025/08/21



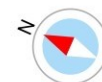
778 Byng Ct, Milton, ON

2nd Floor Exterior Area 752.86 sq ft
Interior Area 697.69 sq ft



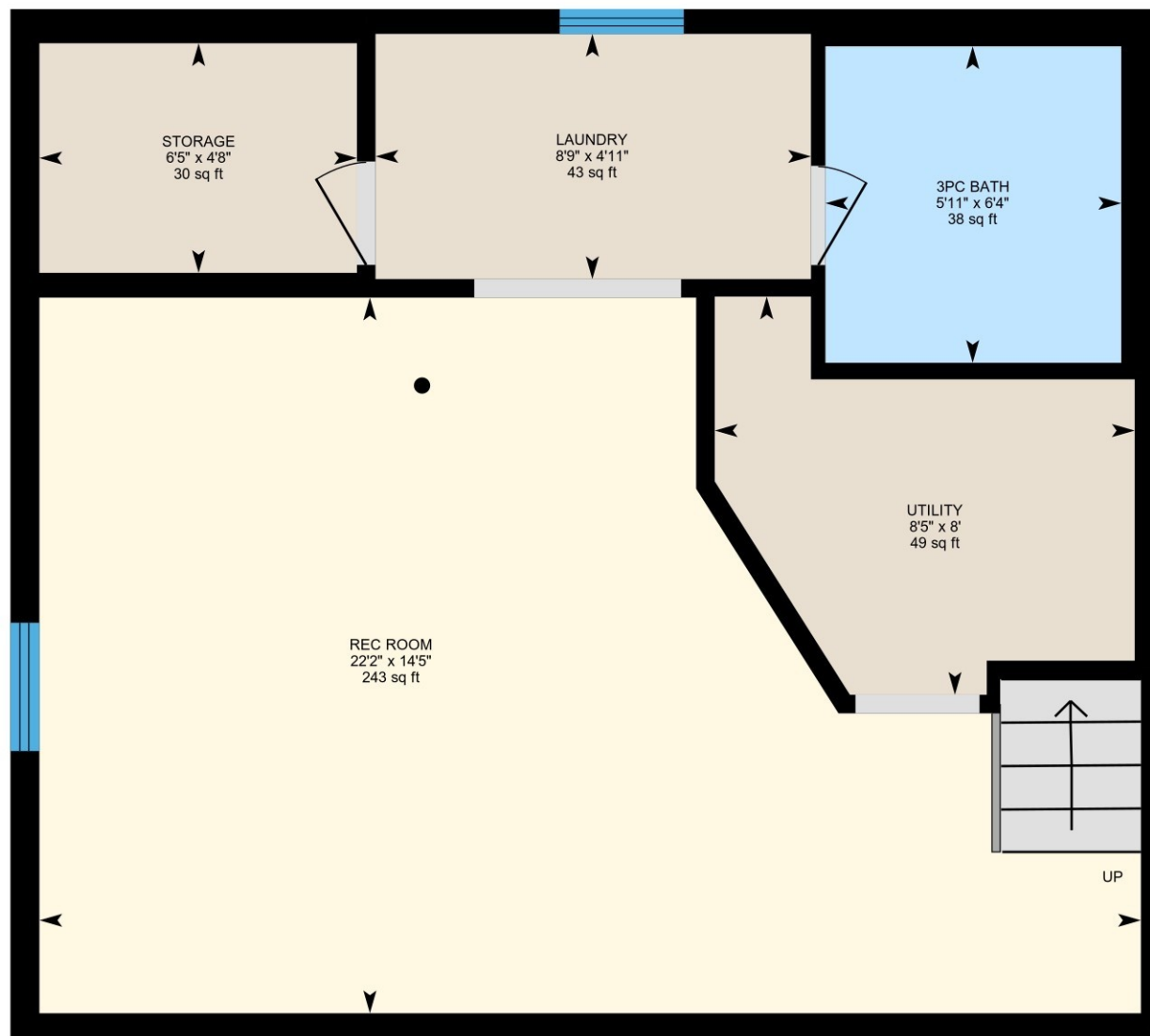
0 3 6 ft

PREPARED: 2025/08/21



778 Byng Ct, Milton, ON

Basement (Below Grade) Exterior Area 481.74 sq ft
Interior Area 431.54 sq ft



0 2 4 ft

PREPARED: 2025/08/21

